

Zettabits: Quick Start Guide

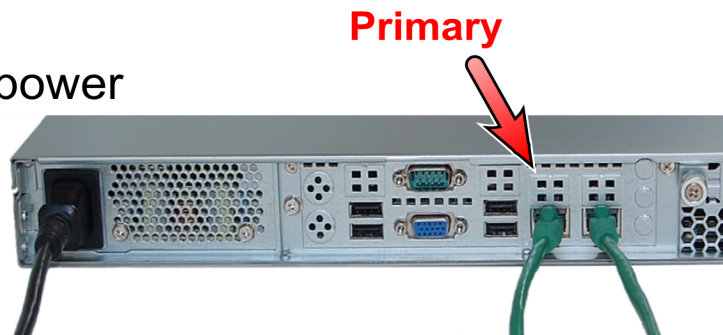


① Plug It In

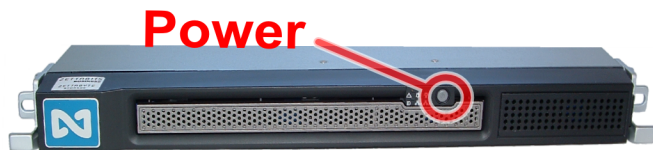
Connect the zBox to power

Connect the zBox
to your router

- To enable network-
failover, connect the
secondary network port as well.



② Power It Up



Power the zBox on

Wait for the zBox to boot

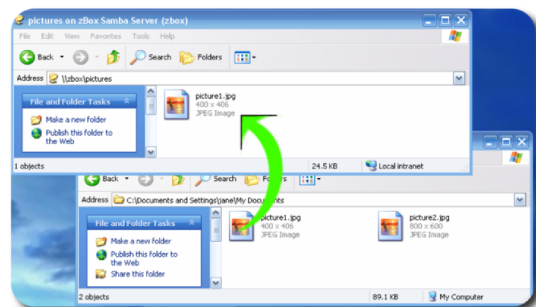
Ready to use

(May take 3-5 minutes)

③ Store Files On It

Browse to \\zbox in Explorer
or

Map \\zbox to a drive letter



ZETTABYTE
STORAGE

Don't Panic. We're always here to help.
support@zettabytestorage.com