

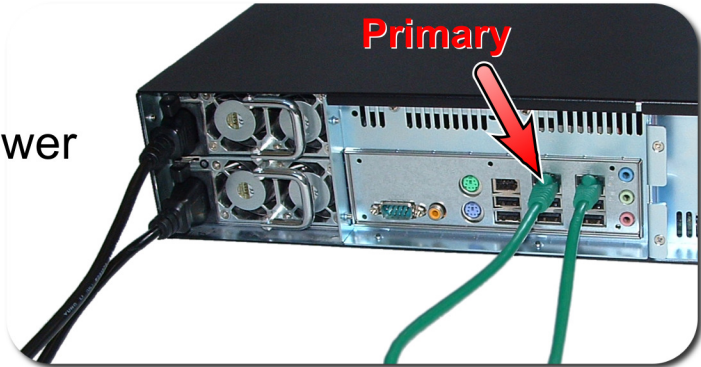
Zettabits: Quick Start Guide



① Plug It In

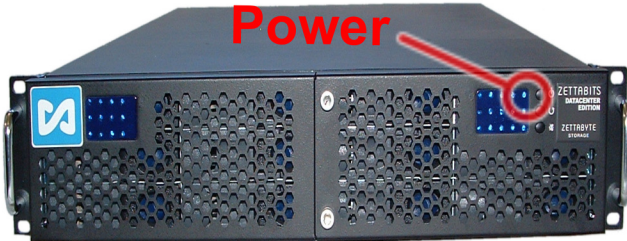
Connect the zBox Power
- use both cords

Connect the zBox to
your Router
- use both cords,
if possible, or the primary port, if not



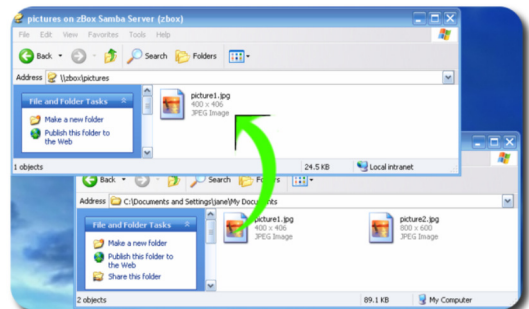
② Power It Up

Power the zBox On
Wait For the zBox to Boot
Ready to Use
(May take 3-5 minutes)



③ Put Files On It

Browse to \\zbox in Explorer
or
Map \\zbox to a drive letter



ZETTABYTE
STORAGE

Don't Panic. We're always here to help.
support@zettabytestorage.com