

Zettabits: Quick Start Guide



① Plug It In

- Connect the zBox to:
 - Power
 - Your Router

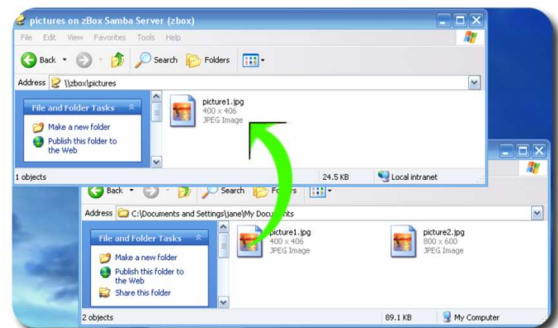


② Power It Up

- Power the zBox On
 - the Power Light will come on (the zBox is running self-tests)
 - Wait For the zBox to Boot
 - the Disk Light will begin blinking
 - Ready For Use
 - the Disk Light stops blinking
- (This may take 3-5 minutes)

③ Put Files On It

- Browse to \\zbox in Explorer or
- Map \\zbox to a driver letter



Don't Panic! We're always here to help:
support@zettabytestorage.com