

# Zettabits: Quick Start Guide



## ① Plug It In

- Connect the zBox to:
  - Power
  - Your Router



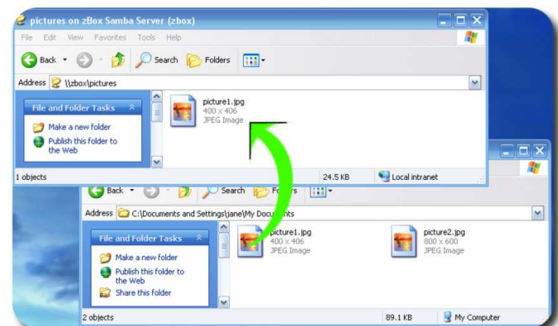
## ② Power It Up

- Plug in your USB Key
- Power the zBox On
  - the Power Light will come on (the zBox is running self-tests)
- Wait For the zBox to Boot
- Ready For Use (This may take 3-5 minutes)



## ③ Put Files On It

- Browse to \\zbox in Explorer or
- Map \\zbox to a driver letter



Don't Panic! We're always here to help:  
[support@zettabytestorage.com](mailto:support@zettabytestorage.com)